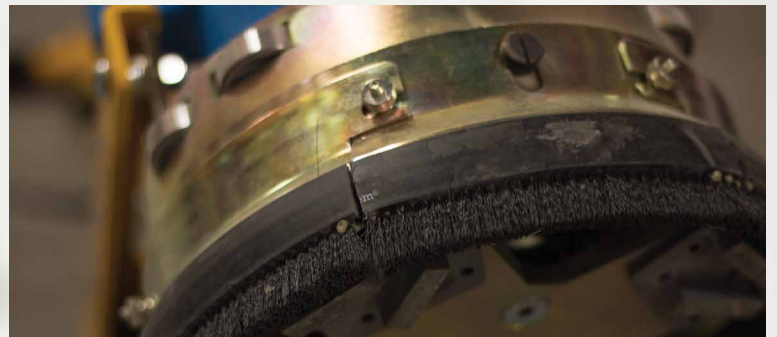
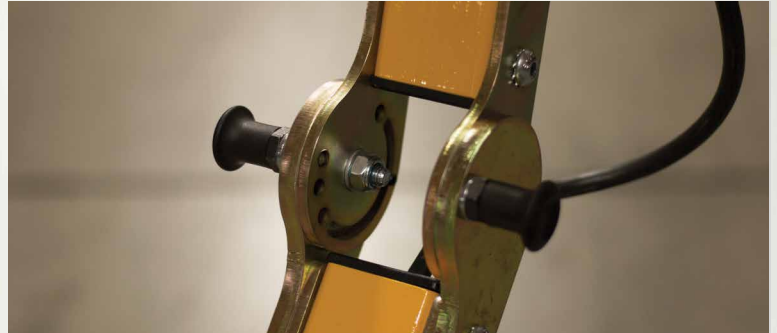


DFG 280

GRINDER

THE PERFECT MACHINE FOR EVERY TIGHT SPOT AND SMALL CORNER



TECHNICAL SPECS

Part No.	DFG 280-3	DFG 280-5	DFG 280-6
Type	Electric	Electric	Electric
Voltage	230V	110V	120V
Power Output	3hp (2.2kW)	3hp (2.2kW)	1.5hp (1.12kW)
Cycles	50Hz	50Hz	60Hz
Head Speed	1400rpm	1400rpm	1725rpm
Motor Speed	1400rpm	1400rpm	1725rpm
Length	40" (1020mm)	40" (1020mm)	40" (1020mm)
Width	11" (280mm)	11" (280mm)	11" (280mm)
Height	37" (940mm)	37" (940mm)	37" (940mm)
Weight	97lbs (44kg)	97lbs (44kg)	97lbs (44kg)

Removable Wt. -

FEATURES

- NEW Floating head design
- 10" Grinding Head
- Folding Handle, with multiple settings for height adjustment
- Built in Lifting Handles
- Edge grinding capabilities on BOTH sides
- "Wall Walking" roller bearing for edge work
- Compact and Robust Design
- Flexible 'moreflex' coupling
- Dust Free Vac Port
- Compatible with TMAG or standard 10" diamond plate tooling

