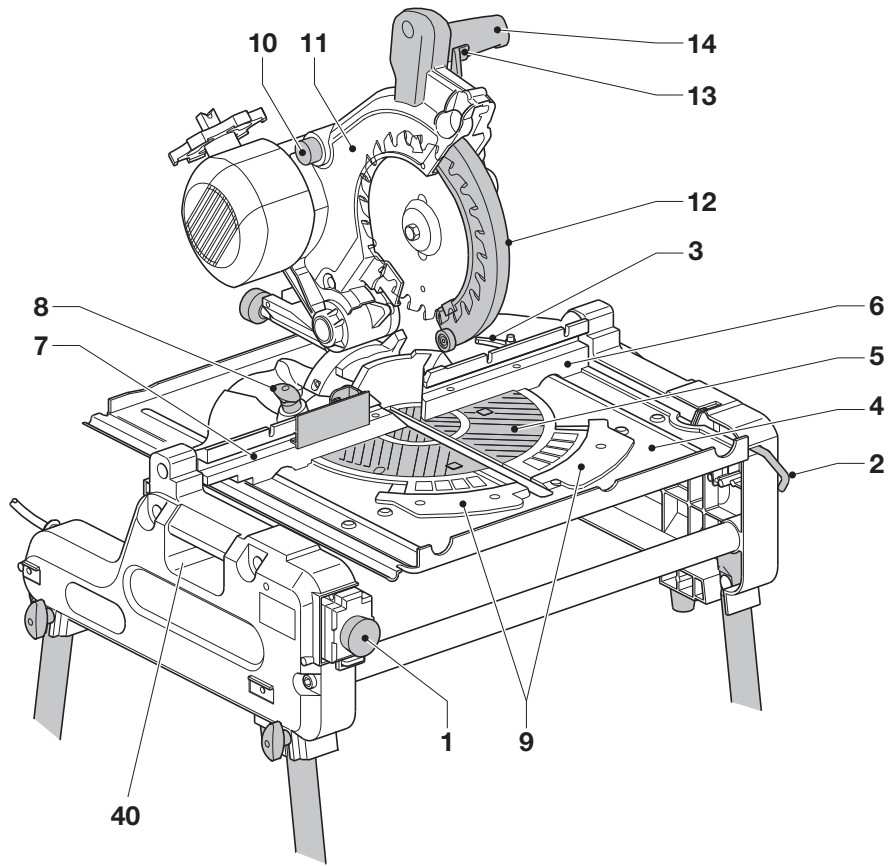

DEWALT®

www.DEWALT.eu

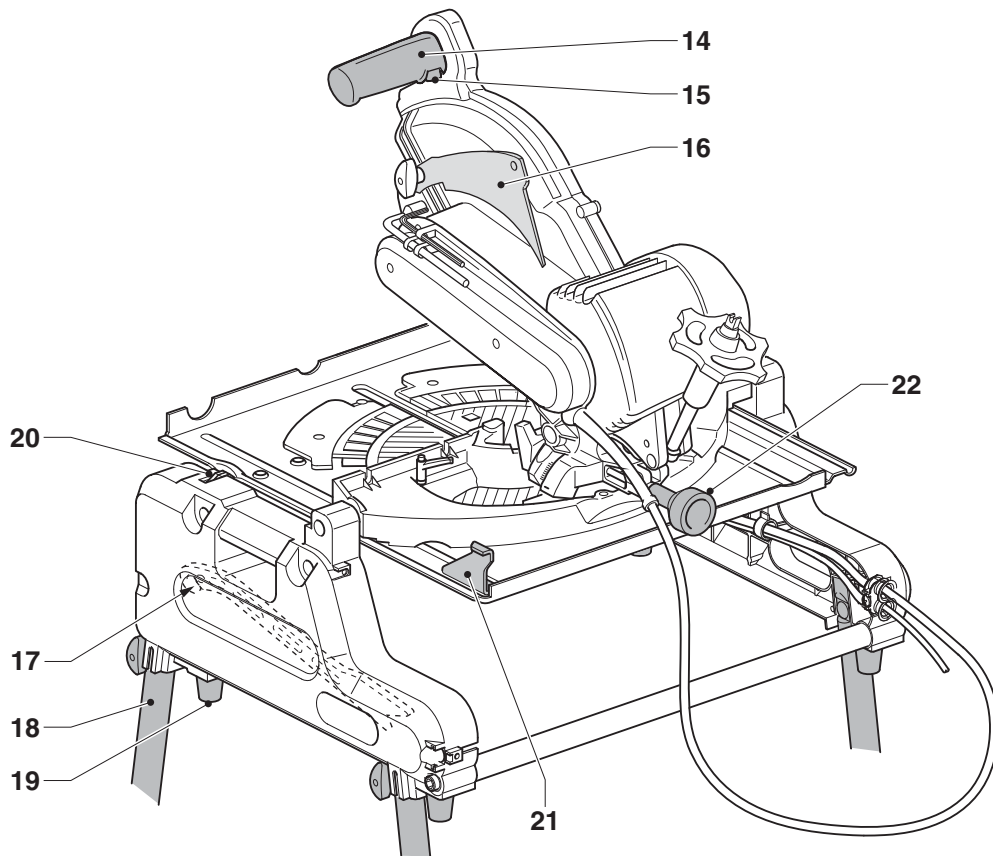
DW743N

0000 00-00

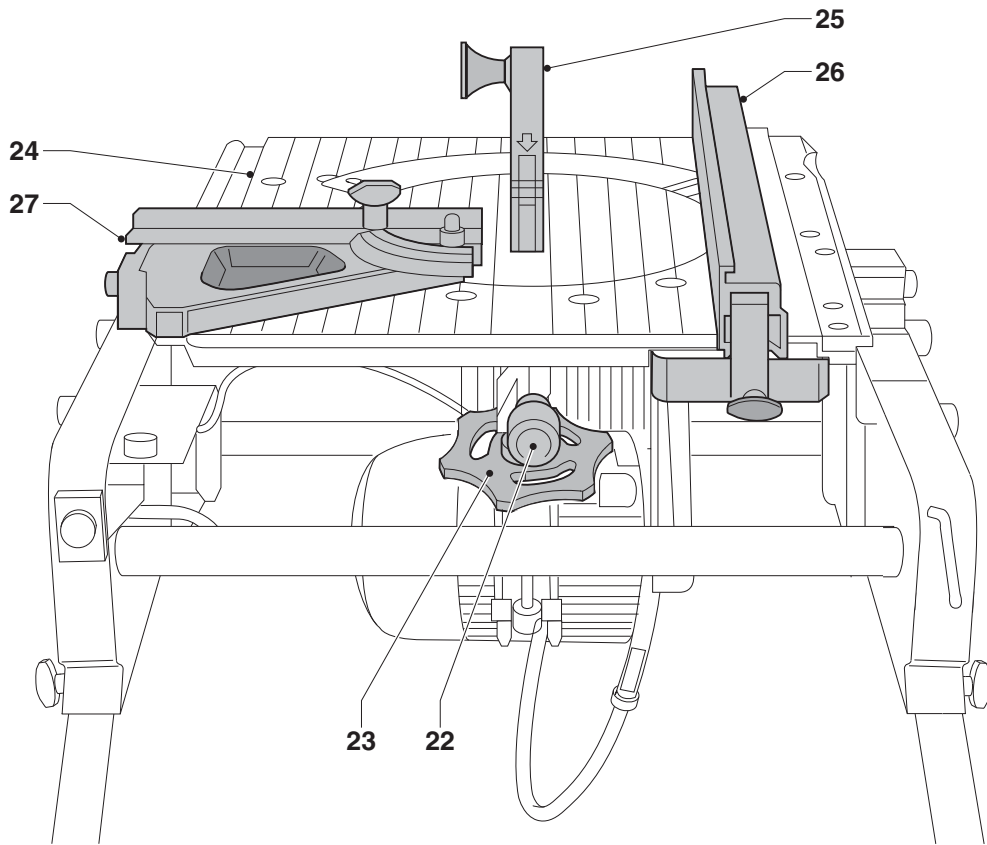
39



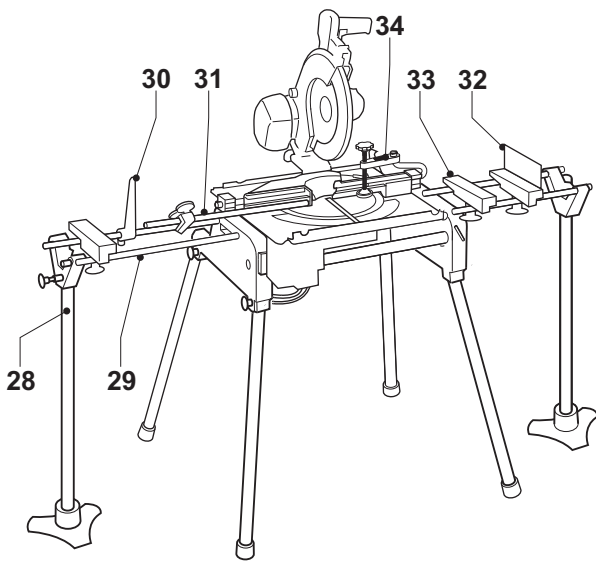
A1



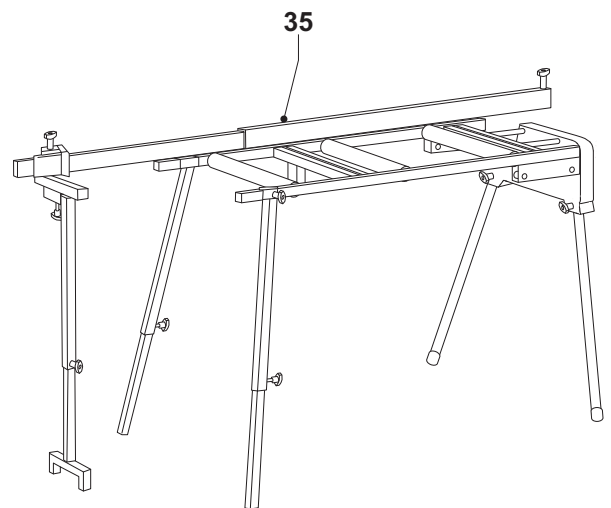
A2



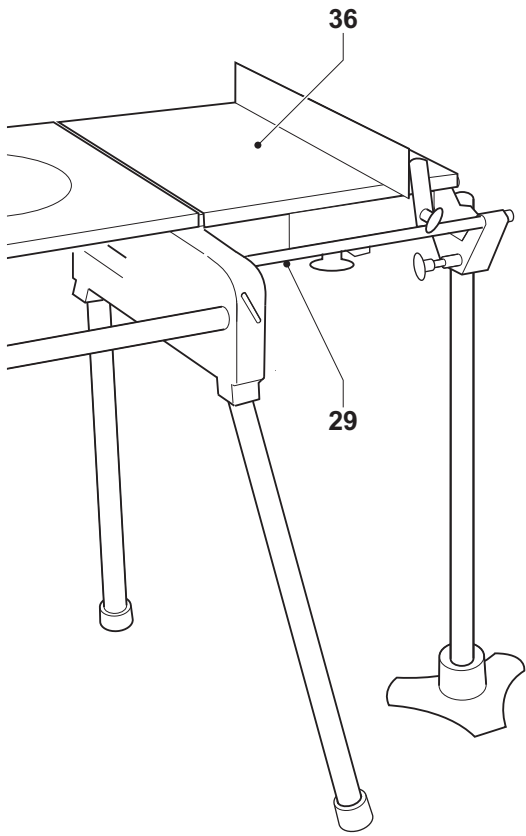
A3



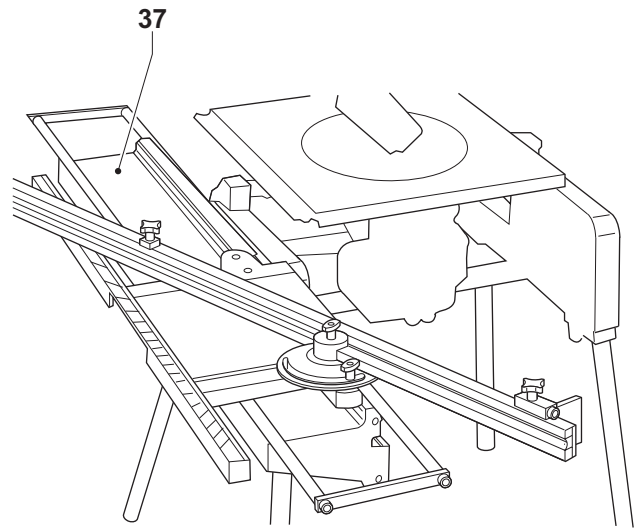
A4



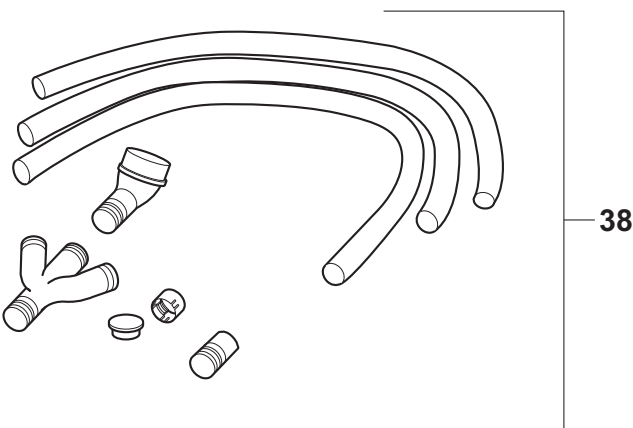
A5



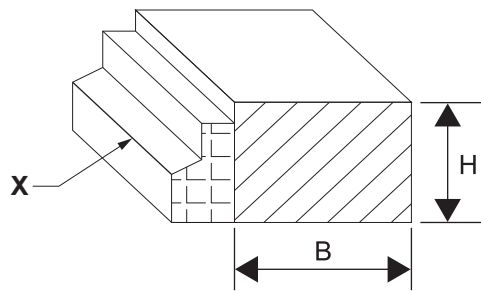
A6



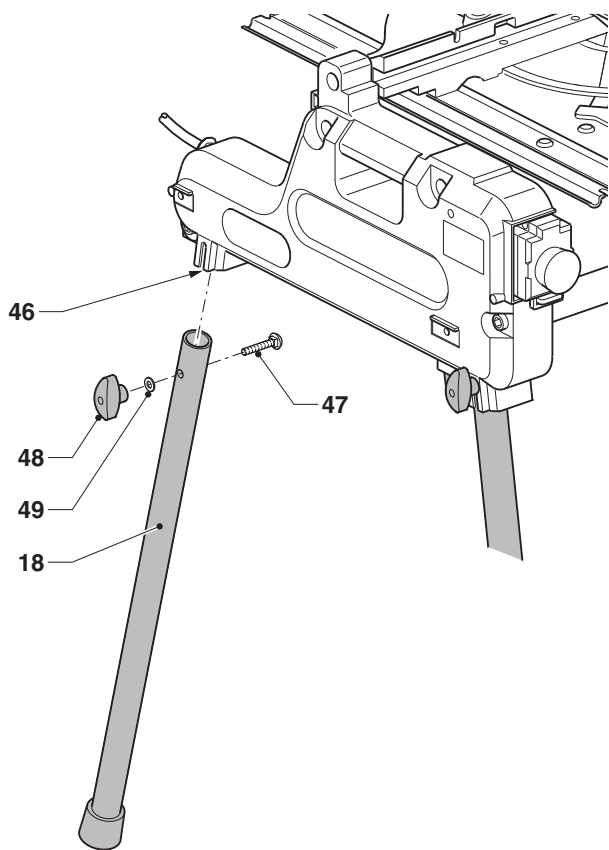
A7



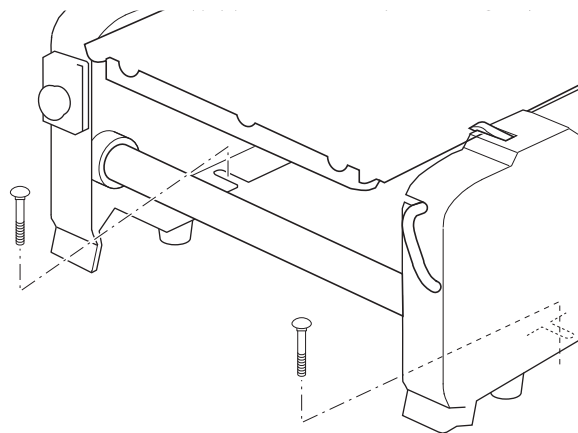
A8



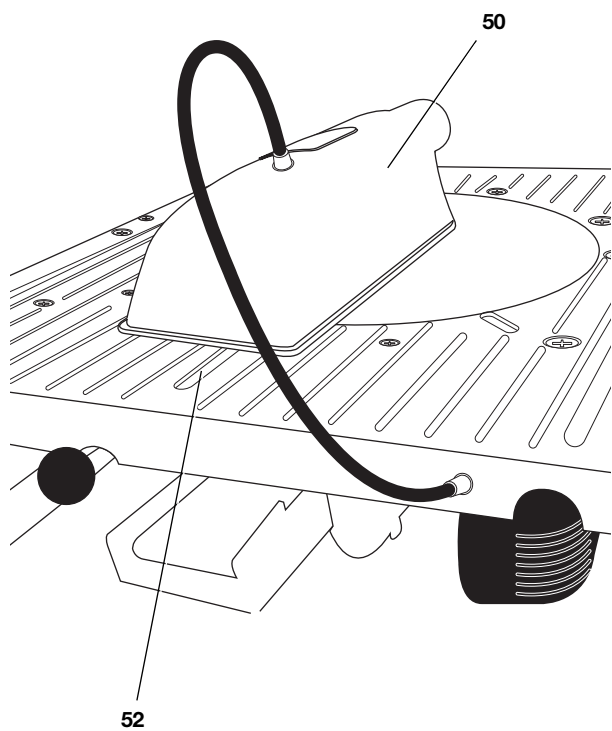
B



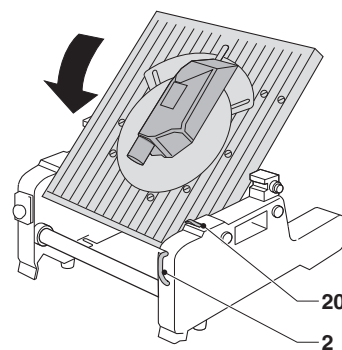
C1



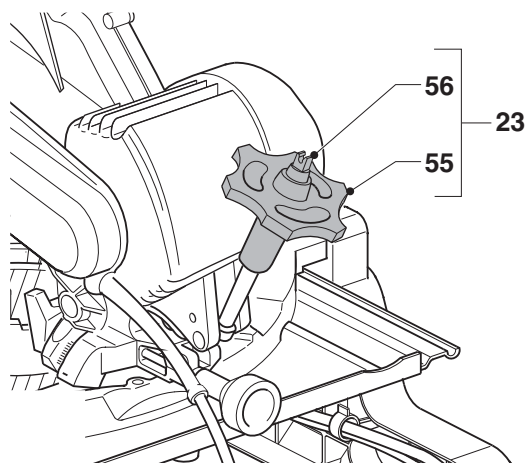
C2



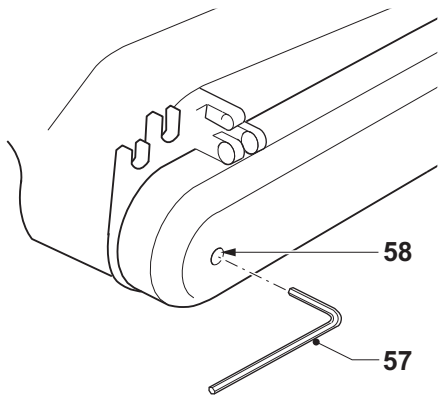
D



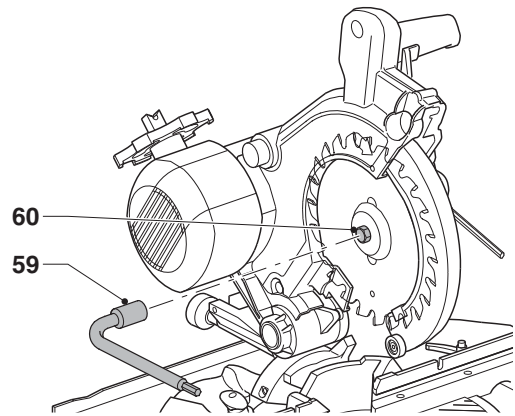
E1



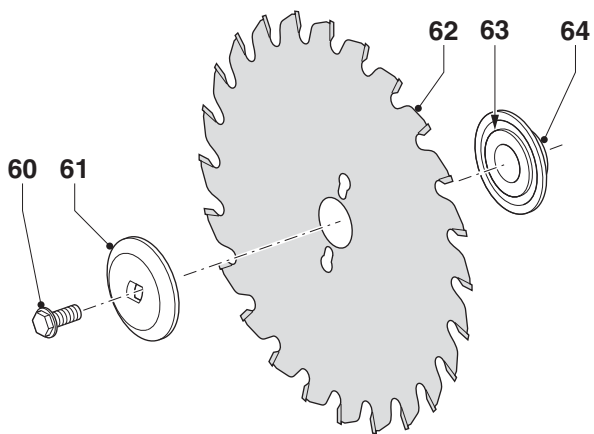
E2



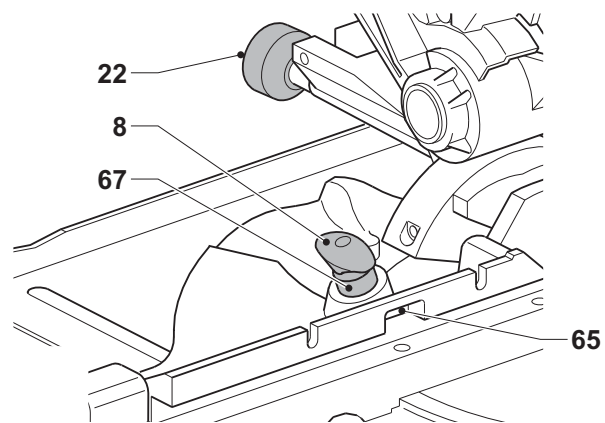
F1



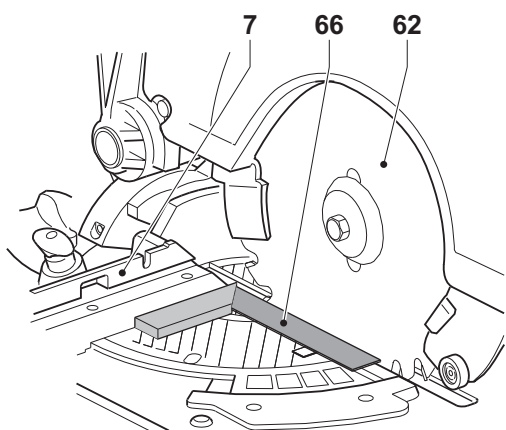
F2



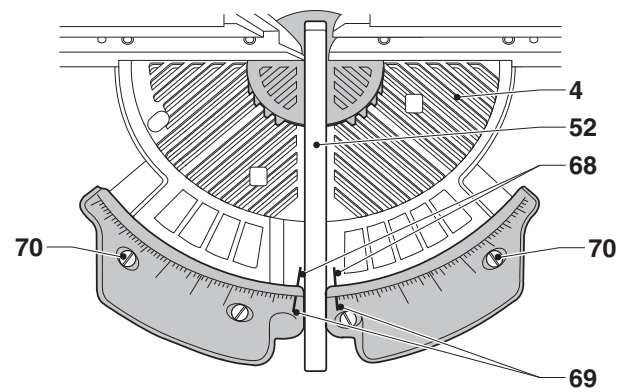
F3



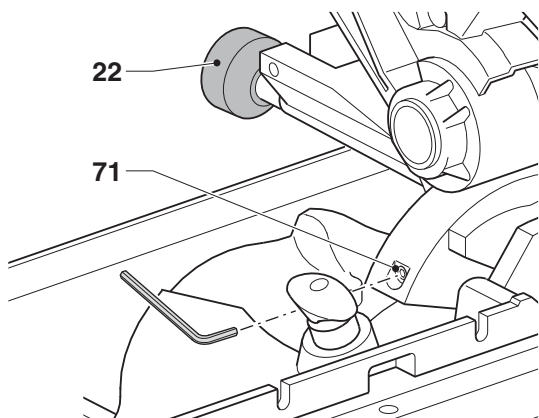
G1



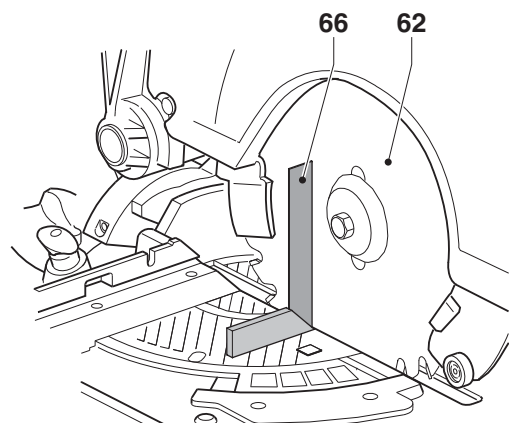
G2



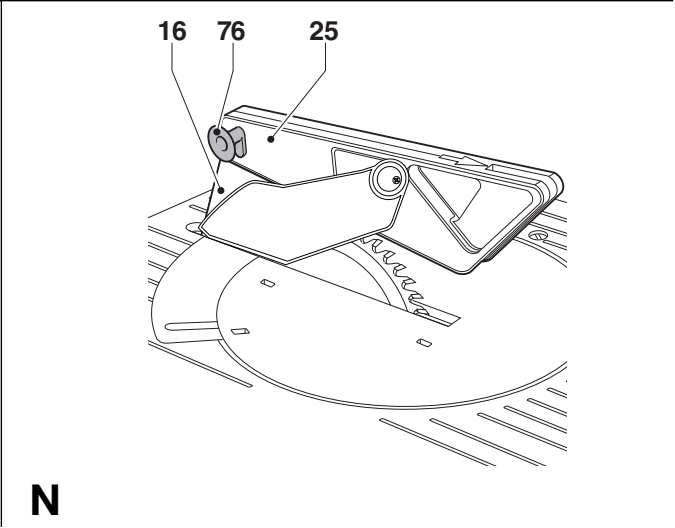
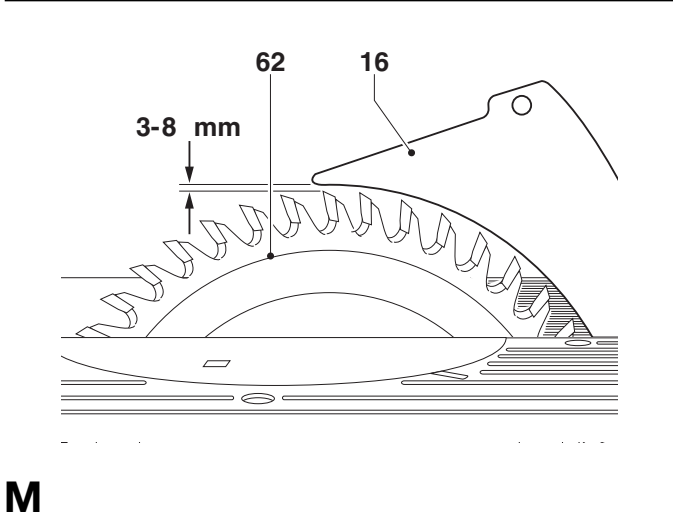
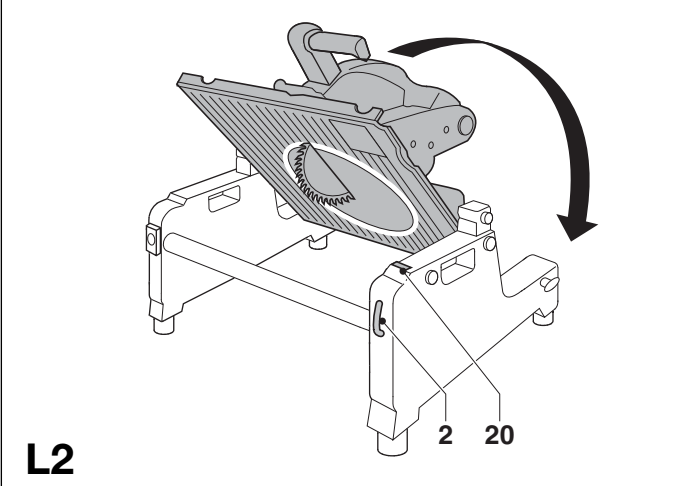
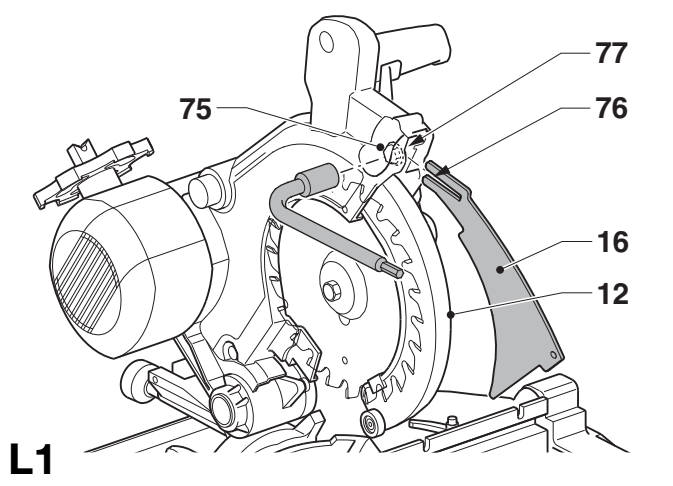
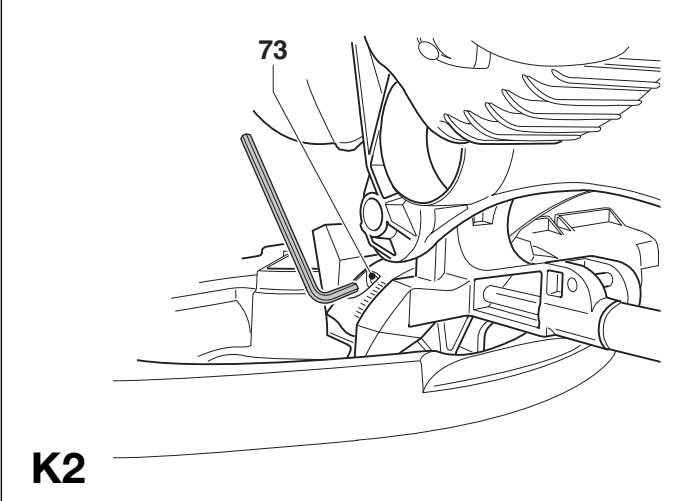
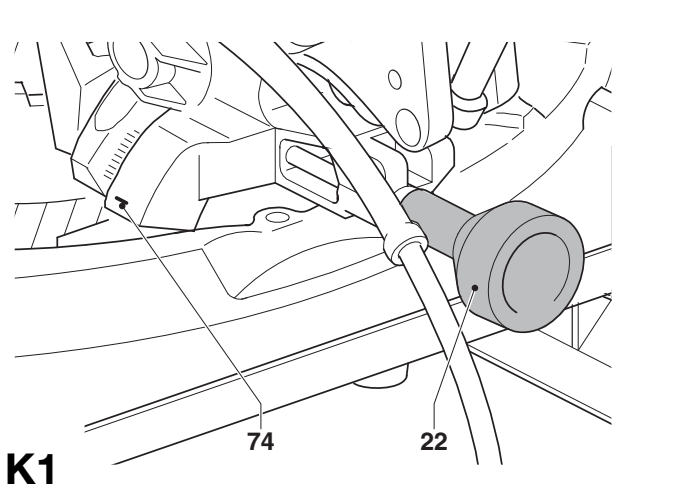
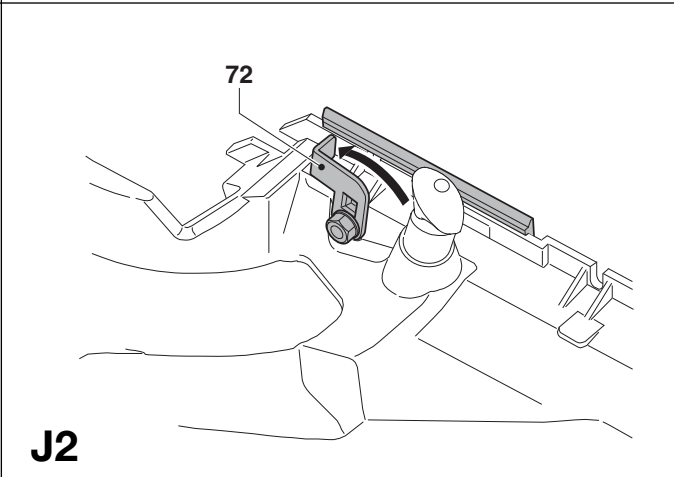
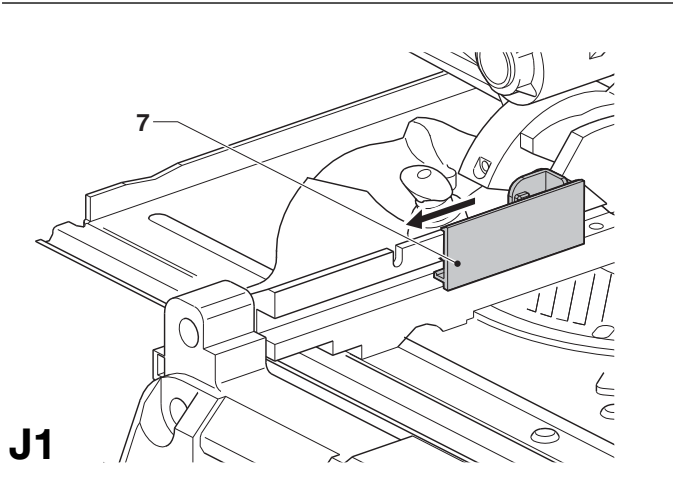
H

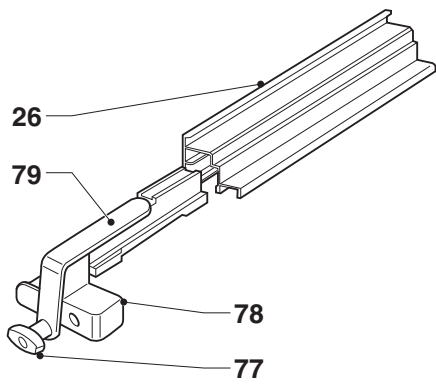


I1

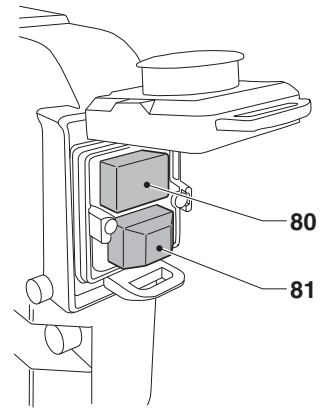


I2

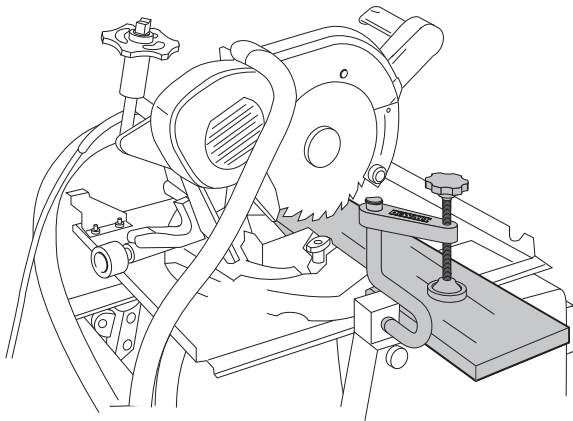




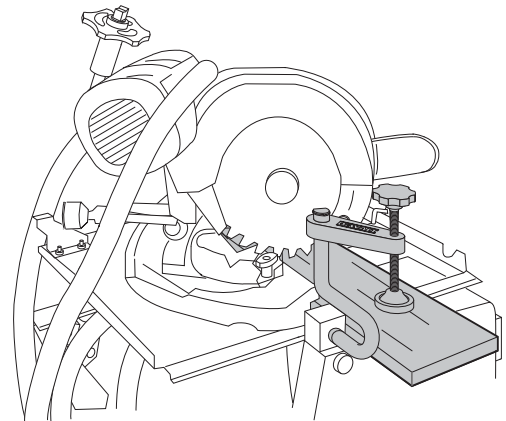
O



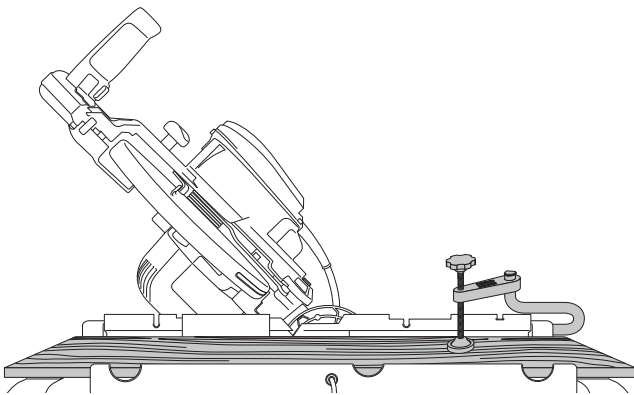
P



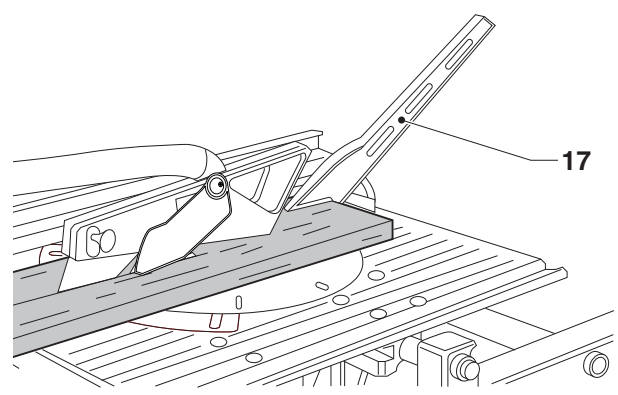
Q



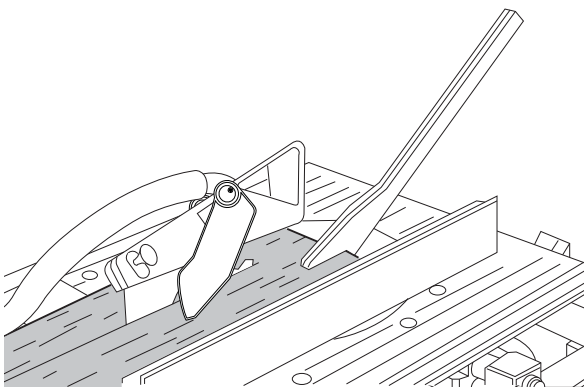
R



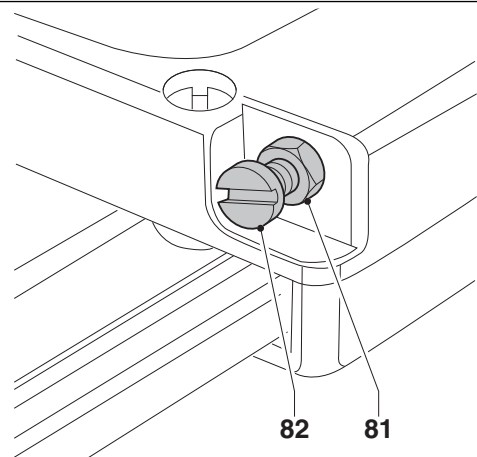
S



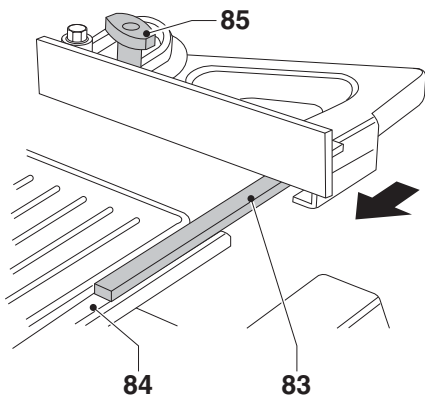
T



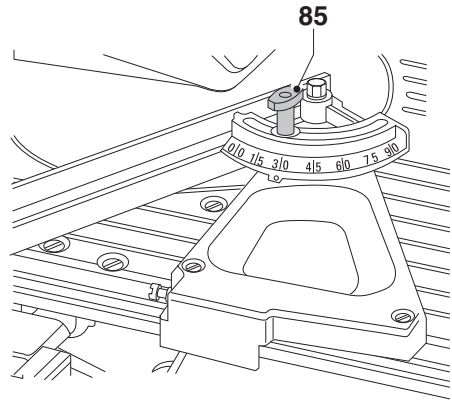
U



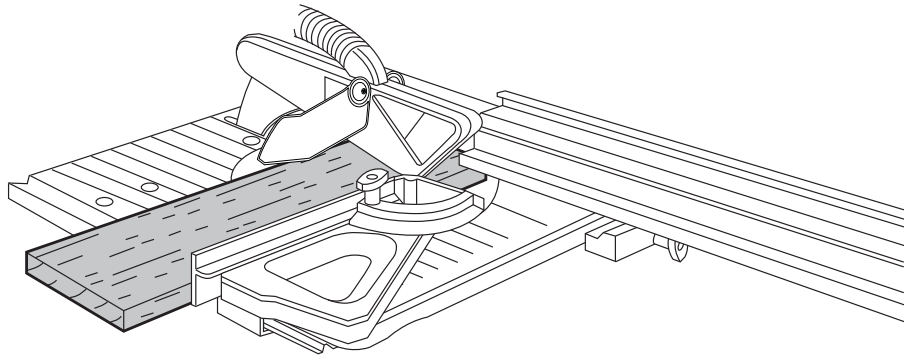
V1



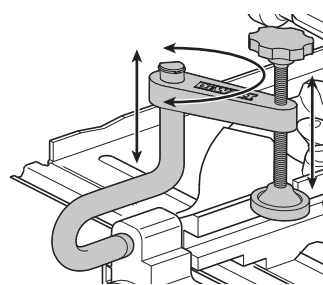
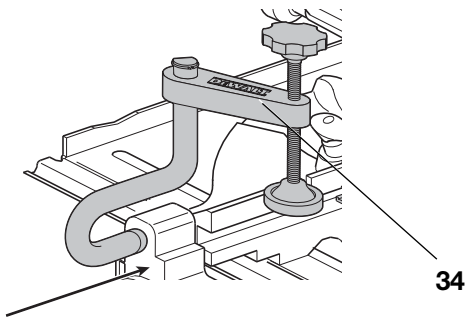
V2



V3



W



X

FLIP-OVER SAW DW743N

Congratulations!

You have chosen a DEWALT tool. Years of experience, thorough product development and innovation make DEWALT one of the most reliable partners for professional power tool users.

Technical Data

		DW743N QS/GB	DW743N LX
Voltage	V	230	–
(UK & Ireland only)	V	230/115	115
Type		4	4
Power input			
230 V tools	W	2000	2000
115–120 V tools	W	1700	1700
No-load speed	min ⁻¹	2850	2850
Blade diameter	mm	250	250
Blade bore	mm	30	30
Blade body thickness	mm	2.2	2.2
Blade tooth thickness	mm	3	3
Riving knife thickness	mm	2.3	2.3
Mitre (max. positions)	left	45°	45°
	right	45°	45°
Bevel (max. positions)	left	45°	45°
Automatic blade brake time	s	< 10	< 10
Weight	kg	37	37

Cutting capacities

Mitre saw mode (fig. B)

Cutting angle	Size of material		Workpiece place against fence (X)
	H mm	Notes B mm	
Straight cross-cut	20	180	No packaging piece required
	30	176	
	40	170	
	68	140	
	85	26	Cross-cut at max. height
Table turned 45° right for mitre cuts	70	95	
Table turned 45° left for mitre cuts	20	130	
Sawhead tilted 45° left for bevel cuts	50	140	

Bench Saw mode

Max. ripping capacity left/right	mm	210/210	210/210
Depth of cut at 90°	mm	0–62	0–62
Depth of cut at 45°	mm	0–32	0–32

L _{PA} (sound pressure)	dB(A)	93	93
K _{PA} (sound pressure uncertainty)	dB(A)	3	3
L _{WA} (sound power)	dB(A)	106	106
K _{WA} (sound power uncertainty)	dB(A)	2.9	2.9

Vibration total values (triax vector sum) determined according to EN 61029-1 and EN 61029-2-11.

Vibration emission value a _h			
a _h =	m/s ²	2.0	2.0
Uncertainty K =	m/s ²	1.5	1.5

The vibration emission level given in this information sheet has been measured in accordance with a standardised test given in EN 61029 and may be used to compare one tool with another. It may be used for a preliminary assessment of exposure.



WARNING: The declared vibration emission level represents the main applications of the tool. However if the tool is used for different applications, with different accessories or poorly maintained, the vibration emission may differ. This may significantly increase the exposure level over the total working period.

An estimation of the level of exposure to vibration should also take into account the times when the tool is switched off or when it is running but not actually doing the job. This may significantly reduce the exposure level over the total working period.

Identify additional safety measures to protect the operator from the effects of vibration such as: maintain the tool and the accessories, keep the hands warm, organisation of work patterns.

Fuses:

Europe	230 V tools	10 Amperes, mains
U.K. & Ireland	230 V tools	13 Amperes, in plugs
U.K. & Ireland	115 V tools	16 Amperes, mains

NOTE: This device is intended for the connection to a power supply system with maximum permissible system impedance Z_{max} of 0.30 Ω at the interface point (power service box) of user's supply.

The user has to ensure that this device is connected only to a power system which fulfils the requirement above. If necessary, the user can ask the public power supply company for the system impedance at the interface point.

Definitions: Safety Guidelines

The definitions below describe the level of severity for each signal word. Please read the manual and pay attention to these symbols.



DANGER: Indicates an imminently hazardous situation which, if not avoided, **will** result in **death or serious injury**.



WARNING: Indicates a potentially hazardous situation which, if not avoided, **could** result in **death or serious injury**.



CAUTION: Indicates a potentially hazardous situation which, if not avoided, **may** result in **minor or moderate injury**.

NOTICE: Indicates a practice **not related to personal injury** which, if not avoided, **may** result in **property damage**.



Denotes risk of electric shock.



Denotes risk of fire.



Denotes sharp edges.

EC-Declaration of Conformity

MACHINERY DIRECTIVE



DW743N

DEWALT declares that these products described under **technical data** are in compliance with:
2006/42/EC, EN 61029-1, EN 61029-2-11.

These products also comply with Directive 2004/108/EC and 2011/65/EU. For more information, please contact DEWALT at the following address or refer to the back of the manual.

The undersigned is responsible for compilation of the technical file and makes this declaration on behalf of DEWALT.



Horst Grossmann
Vice President Engineering and Product Development
DEWALT, Richard-Klinger-Straße 11,
D-65510, Idstein, Germany
01.11.2011

Safety Instructions



WARNING! When using electric tools basic safety precautions should always be followed to reduce the risk of fire, electric shock and personal injury including the following.

Read all these instructions before attempting to operate this product and save these instructions.

SAVE THIS MANUAL FOR FUTURE REFERENCE

General Safety Rules

1. Keep work area clear.

Cluttered areas and benches invite injuries.

2. Consider work area environment.

Do not expose the tool to rain. Do not use the tool in damp or wet conditions. Keep the work area well lit (250 - 300 Lux). Do not use the tool where there is a risk of causing fire or explosion, e.g., in the presence of flammable liquids and gases.

3. Guard against electric shock.

Avoid body contact with earthed surfaces (e.g., pipes, radiators, cookers and refrigerators). When using the tool under extreme conditions (e.g., high humidity, when metal swarf is being produced, etc.), electric safety can be improved by inserting an isolating transformer or a (FI) earth-leakage circuit-breaker.

4. Keep other persons away.

Do not let persons, especially children, not involved in the work, touch the tool or the extension cord and keep them away from the work area.

5. Store idle tools.

When not in use, tools must be stored in a dry place and locked up securely, out of reach of children.

6. Do not force the tool.

It will do the job better and safer at the rate to which it was intended.

7. Use the right tool.

Do not force small tools to do the job of a heavy duty tool. Do not use tools for purposes not intended; for example do not use circular saws to cut tree limbs or logs.

8. Dress properly.

Do not wear loose clothing or jewellery, as these can be caught in moving parts. Non-skid footwear is recommended when working outdoors. Wear protective hair covering to contain long hair.

9. Use protective equipment.

Always use safety glasses. Use a face or dust mask if working operations create dust or flying particles. If these particles might be considerably hot, also wear a heat-resistant apron. Wear ear protection at all times. Wear a safety helmet at all times.

10. Connect dust extraction equipment.

If devices are provided for the connection of dust extraction and collecting equipment, ensure these are connected and properly used.

11. Do not abuse the cord.

Never yank the cord to disconnect it from the socket. Keep the cord away from heat, oil and sharp edges. Never carry the tool by its cord.

12. Secure work.

Where possible use clamps or a vice to hold the work. It is safer than using your hand and it frees both hands to operate the tool.

13. Do not overreach.

Keep proper footing and balance at all times.

14. Maintain tools with care.

Keep cutting tools sharp and clean for better and safer performance. Follow instructions for lubricating and changing accessories. Inspect tools periodically and if damaged have them repaired by an authorized service facility. Keep handles and switches dry, clean and free from oil and grease.

15. Disconnect tools.

When not in use, before servicing and when changing accessories such as blades, bits and cutters, disconnect tools from the power supply.

16. Remove adjusting keys and wrenches.

Form the habit of checking to see that adjusting keys and wrenches are removed from the tool before operating the tool.

17. Avoid unintentional starting.

Do not carry the tool with a finger on the switch. Be sure that the tool is in the "off" position before plugging in.

18. Use outdoor extension leads.

Before use, inspect the extension cable and replace if damaged. When the tool is used outdoors, use only extension cords intended for outdoor use and marked accordingly.

19. Stay alert.

Watch what you are doing. Use common sense. Do not operate the tool when you are tired or under the influence of drugs or alcohol.

20. Check for damaged parts.

Before use, carefully check the tool and mains cable to determine that it will operate properly and perform its intended function. Check for alignment of moving parts, binding of moving parts, breakage of parts, mounting and any other conditions that may affect its operation. A guard or other part that is damaged should be properly repaired or replaced by an authorized service centre unless otherwise indicated in this instruction manual. Have defective switches replaced by an authorized service centre. Do not use the tool if the switch does not turn it on and off. Never attempt any repairs yourself.



WARNING! The use of any accessory or attachment or performance of any operation with this tool other than those recommended in this instruction manual may present a risk of personal injury.

21. Have your tool repaired by a qualified person.

This electric tool complies relevant safety rules. Repairs should only be carried out by qualified persons using original spare parts; otherwise this may result in considerable danger to the user.

Additional Safety Rules for Flip-over Saws

- Do not allow untrained people to operate this machine.
- Do not use the saw to cut materials other than wood or similar materials.
- Select the correct saw blade for the material to be cut.
- Do not use cracked or damaged saw blades.
- Do not use HIGH SPEED STEEL blades.
- Use correctly sharpened blades. Observe the maximum speed marked on the saw blade. The marked speed must always be equal to or greater than the no-load speed of the machine specified under **technical data**.
- Do not use any spacers and spindle rings to make a blade fit onto the spindle.
- Ensure that the saw blade is mounted correctly before use.
- Make sure that the blade rotates in the correct direction. Keep the blade sharp.
- Do not use blades of larger or smaller diameter than recommended. For the proper blade rating refer to the **technical data**. Use only the blades specified in this manual, complying with EN 847-1.
- Consider applying specially designed noise-reduction blades.

- Disconnect the machine from the mains supply before leaving the working place.
- Do not use the saw without the guards and riving knife in position and properly maintained, especially when changing from mitre saw mode to bench saw mode, or vice versa.
- Make sure the floor area around the machine is level, well maintained and free of loose materials, e.g. chips and cut-offs.
- Make sure adequate general or localized lighting is provided.
- Wear suitable personal protective equipment when necessary, including:
 - hearing protection to reduce the risk of induced hearing loss;
 - respiratory protection to reduce the risk of inhalation of harmful dust;
 - gloves for handling saw blades and rough material. Saw blades should be carried in a holder wherever practicable.
- Before making any operation ensure the machine is located on an even and stable surface.
- Refrain from removing any cut-offs or other parts of the work piece from the cutting area while the saw is running and the saw head is not in the rest position.
- Replace the table insert when worn.
- Replace the table when the slot in the table is too wide.
- Report faults in the machine, including guards or saw blades, to your dealer as soon as they are discovered.
- Ensure that the upper portion of the saw blade is completely enclosed in the mitre sawing mode.
- Ensure that the arm is securely fixed in the working position in the bench sawing mode.
- Ensure that the arm is securely fixed when bevelling in the bench saw mode.
- Take care when grooving during the bench saw operation by using appropriate guarding system. Slotting is not allowed.
- Connect the saw to a dust collection device when sawing wood. Always consider factors which influence exposure of dust such as:
 - Type of material to be machined (chip board produces more dust than wood);
 - Correct adjustment of the saw blade;
 - Ensure that the local extraction as well as hoods, baffles and chutes are properly adjusted.
 - Dust extractor with air velocity not less than 20 m/s
- Do not use any abrasive discs or diamond cutting wheels..
- In case of an accident or machine failure, immediately turn the machine off and disconnect machine from the power source.
- Report the failure and mark the machine in suitable form to prevent other people from using the defective machine.
- When the saw blade is blocked due to abnormal feed force during cutting, turn the machine off and disconnect it from power supply. Remove the workpiece and ensure that the saw blade runs free. Turn the machine on and start new cutting operation with reduced feed force.
- Never cut light alloy, especially magnesium.
- Whenever the situation allows, mount the machine to a bench using bolts with a diameter of 8 mm and 80 mm in length (fig. C2).
- Select the correct blade for the material to be cut.
- Use a holder or wear gloves when handling a saw blade or rough material.
- Raise the blade from the kerf in the workpiece prior to releasing the switch.
- Ensure that the arm is securely fixed when performing bevel cuts.
- Do not wedge anything against the fan to hold the motor shaft.
- The blade guard on your saw will automatically raise when the arm is brought down; it will lower over the blade when the arm is raised. The guard can be raised by hand when installing or removing saw blades or for inspection of the saw. Never raise the blade guard manually unless the saw is switched off.
- Keep the surrounding area of the machine well maintained and free of loose materials, e.g. chips and cut-offs.
- Check periodically that the motor air slots are clean and free of chips.
- Replace the kerf plate when worn.
- Disconnect the machine from the mains before carrying out any maintenance work or when changing the blade.
- Never perform any cleaning or maintenance work when the machine is still running and the head is not in the rest position.
- When possible, always mount the machine to a bench.
- If you use a laser to indicate the cutting line, make sure that the laser is of class 2 according to EN 60825-1:2007. Do not replace a laser diode with a different type. If damaged, have the laser repaired by an authorised repair agent.
- Never use the machine in mitre saw mode as long as the guard is not fitted (50, fig. D).
- Never cut workpiece shorter than 150 mm.
- Without additional support the machine is designed to accept the maximum workpiece size of:
 - Height 68 mm by width 140 mm by length 600 mm
 - Longer workpieces need to be supported by suitable additional table, e.g. DE3497. Always clamp the workpiece safely.
- Always clamp the workpiece safely.

Additional Safety Rules for Bench Saws

Additional Safety Rules for Mitre Saws

- Do not use saw blades with a body thickness greater or a width of tooth smaller than the thickness of the riving knife.
- Make sure that the blade rotates in the correct direction and that the teeth are pointing to the front of the bench saw.
- Be sure all clamp handles are tight before starting any operation.
- Be sure all blade and flanges are clean and the recessed sides of the collar are against the blade. Tighten the arbor nut securely.
- Keep the saw blade sharp and properly set.
- Make sure that the riving knife is adjusted to the correct distance from the blade - maximum 5 mm.
- Never operate the saw without the upper and lower guards in place.
- Keep your hands out of the path of the saw blade.
- Disconnect the saw from the mains supply before changing blades or carrying out maintenance.
- Use a push stick at all times, and ensure that you do not place hands closer than 150 mm from the saw blade while cutting.
- Do not attempt to operate on anything but the designated voltage.
- Do not apply lubricants to the blade when it is running.
- Do not reach around behind the saw blade.
- Always keep the push stick in its place when not in use.
- Do not stand on top of the unit.
- During transportation make sure that the upper part of the saw blade is covered, e.g., by the guard.
- Do not use the guard for handling or transportation.
- Do not use blades with a body thickness greater or a width of tooth smaller than the thickness of the riving knife.
- Consider applying specially designed noise-reduction blades.
- Make sure all locking knobs and clamp handles are tight before starting any operation.
- Do not operate the machine without the guard in position, or if the guard does not function or is not maintained properly.
- Never use your saw without the kerf plate.
- Never place either hand in the blade area when the saw is connected to the electrical power source.
- Never attempt to stop a machine in motion rapidly by jamming a tool or other means against the blade; serious accidents can be caused unintentionally in this way.
- Before using any accessory consult the instruction manual. The improper use of an accessory can cause damage.

Additional Safety Rules for Table Saws

- Rebating, slotting or grooving is not allowed.
- Always use the push stick. Never cut workpiece smaller than 50 mm.
- Without additional support the machine is designed to accept the maximum workpiece size of:
 - Height 62 mm by width 600 mm by length 1500 mm
 - Longer workpieces need to be supported by suitable additional table, e.g. DE3497 or DE3472.

Residual Risks

The following risks are inherent to the use of saws:

- injuries caused by touching the rotating parts

In spite of the application of the relevant safety regulations and the implementation of safety devices, certain residual risks cannot be avoided. These are:

- Impairment of hearing.
- Risk of accidents caused by the uncovered parts of the rotating saw blade.
- Risk of injury when changing the blade.
- Risk of squeezing fingers when opening the guards.
- Health hazards caused by breathing dust developed when sawing wood, especially oak, beech and MDF.

The following factors are of influence to noise production:

- The material to be cut.
- The type of saw blade.
- The feed force.

The following factors increase the risk of breathing problems:

- No dust extractor connected when sawing wood.
- Insufficient dust extraction caused by uncleaned exhaust filters
- Worn saw blade.
- Workpiece not exactly guided.

Markings on Tool

The following pictograms are shown on the tool:



Read instruction manual before use.



Wear ear protection.



Wear eye protection.



Never use the mitre saw when the guard is not in place.



When using the machine in the mitre saw mode, make sure to operate the trigger switch when switching on and off. Do not operate the switchbox in this mode.



When using the machine in the bench saw mode, make sure that the riving knife has been mounted. Do not use the machine without the riving knife.



Do not use the riving knife when using the machine in the mitre saw mode. Make sure that the riving knife is secured in the upper rest position (fig. A2).



Carrying point

DATE CODE POSITION (FIG. A1)

The Date Code (39), which also includes the year of manufacture, is printed into the housing.

Example:

2012 XX XX

Year of Manufacture

Package Contents

The package contains:

- 1 Partly assembled machine
- 4 Legs
- 1 Saw blade
- 1 Box containing:
 - 1 Top guard for bench saw position
 - 1 Under-table guard for mitre saw position
 - 1 Parallel fence
 - 1 Push stick
 - 1 Material clamp
- 1 Plastic bag containing:
 - 4 M8 locking knobs
 - 4 M8 x 50 mushroom head bolts
 - 4 D8 flat washers
 - 1 Locking grommet
- 1 Instruction manual
- 1 Exploded drawing
- Check for damage to the tool, parts or accessories which may have occurred during transport.
- Take the time to thoroughly read and understand this manual prior to operation.
- Remove the saw from the packaging material carefully.

Description (fig. A1–A8)



WARNING: Never modify the power tool or any part of it. Damage or personal injury could result.

A1

- 1 On/off switch (bench saw mode)
- 2 Table release lever
- 3 Rotating table clamp
- 4 Mitre saw table
- 5 Rotating table
- 6 Fence right-hand side
- 7 Fence left-hand side
- 8 Rotating table location plunger
- 9 Mitre scale/table insert
- 10 Dust extraction adapter
- 11 Fixed upper blade guard
- 12 Moveable lower blade guard
- 13 Guard release lever
- 14 Operating handle

A2

- 14 Operating handle
- 15 Trigger switch (mitre saw mode)
- 16 Riving knife storage
- 17 Push stick storage
- 18 Leg
- 19 Foot
- 20 Table locking device
- 21 Saw table retention bracket

22 Bevel clamp handle

BENCH SAW MODE

A3

22 Bevel clamp handle
23 Height adjuster
24 Bench saw table
25 Upper blade guard
26 Parallel fence
27 Mitre fence (option)

OPTIONAL ACCESSORIES

For use in mitre saw mode:

A4

28 Adjustable stand 760 mm (max. height) (DE3474)
29 Support guide rails 1,000 mm (DE3494)
29 Support guide rails 500 mm (DE3491)
30 Swivelling stop (DE3462)
31 Length stop for short workpieces (to be used with guide rails [29]) (DE3460)
32 Support with removable stop (DE3495)
33 Support with stop removed (DE3495)
34 Material clamp (DE3461)

A5

35 Roller support table (DE3497)

For use in bench saw mode:

A3

27 Mitre fence (DE3496)

A6

36 Extension table (DE3472)

A7

37 Single sliding table (DE3471)

Not shown

– Double sliding table

For use in all modes:

A8

38 Three way dust extraction kit (DE3500)

INTENDED USE

Your DEWALT flip-over saw has been designed to operate as a mitre saw or saw bench to perform the four main sawing operations of ripping, cross-cutting, bevelling and mitring easily, accurately and safely.

This unit is designed for use with a nominal blade diameter 250 mm carbide tip blade for professional cutting wood, wood products and plastics.

MITRE SAW MODE

In mitre saw mode, the sawing machine is used in vertical, mitre or bevel position.

BENCH SAW MODE

Turned over on its central axis, the sawing machine is used to perform the standard ripping operation and for sawing wide pieces by manually feeding the workpiece into the blade.



WARNING: Do not use the machine for other purposes as described.

- This product is not intended for use by persons (including children) suffering from diminished physical, sensory or mental abilities; lack of experience, knowledge or skills unless they are supervised by a person responsible for their safety. Children should never be left alone with this product.

Electrical Safety

The electric motor has been designed for one voltage only. Always check that the power supply corresponds to the voltage on the rating plate.

This machine is of Class I construction; therefore earthed (grounded) connection is required.



WARNING: 115 V units have to be operated via a fail-safe isolating transformer with an earth screen between the primary and secondary winding.

If the supply cord is damaged, it must be replaced by a specially prepared cord available through the DEWALT service organisation.

Mains Plug Replacement (U.K. & Ireland Only)

If a new mains plug needs to be fitted:

- Safely dispose of the old plug.
- Connect the brown lead to the live terminal in the plug.
- Connect the blue lead to the neutral terminal.
- Connect yellow/green lead to the earth terminal

Follow the fitting instructions supplied with good quality plugs.

Recommended fuse: 13 A.

Fitting a Mains Plug to 115 V Units (U.K. and Ireland Only)

- The plug should be fitted by a competent person. If you are in doubt, contact an authorized DEWALT repair agent or qualified electrician.
- The plug fitted should comply with BS EN60309 (BS4343), 16 Amps, earthing contact position 4h.

Using an Extension Cable

If an extension cable is required, use an approved 3-core extension cable suitable for the power input of this tool (see **Technical Data**). The minimum conductor size is 1.5 mm²; the maximum length is 30 m.

When using a cable reel, always unwind the cable completely.

ASSEMBLY AND ADJUSTMENTS



WARNING: To reduce the risk of injury, turn unit off and disconnect machine from power source before installing and removing accessories, before adjusting or changing set-ups or when making repairs. Be sure the trigger switch is in the OFF position. An accidental start-up can cause injury.

Unpacking



WARNING: When moving the machine, always seek assistance. The machine is too heavy for one person to handle.

- Remove the loose packaging material from the box.
- Lift the machine out of the box.
- Remove the parts box from the interior of the machine.
- Remove any remaining packing material from the machine.

Mounting the Legs (fig. C1)

With the legs mounted, the machine is suitable for stand-alone placement.

- Turn the machine upside down.
- Pass a coach bolt (47) from the flat side through the holes into each of the legs (18).
- Place a lock knob (48) and washer (49) onto the bolts.
- Present a leg (18) to each of the mounting points (46) located at the edges on the inside of the base. For each leg, make sure that the lock knob and washer locate at the outside of the open ended slot.
- Tighten the lock knobs.

- Turn the machine straight up. Make sure it is level; adjust the leg clamping height if required.

Mounting the Machine to the Workbench (fig. C2)

With the legs removed, the machine is suitable for placement on a workbench. To ensure a safe operation, the machine has to be fixed to the workbench and mounted with bolts 8 mm diameter by 80 mm long.

ASSEMBLY FOR MITRE SAW MODE

Mounting the Under-table Guard (fig. D)

The under-table guard (50) is fitted to the top of the bench saw table.

- Place the two hooks on the left of the guard into the oblong slots on the left of the blade slot (52).
- Place the guard flat on the table and press it in the locking grommet.
- To remove, loosen the grommet with a screwdriver and proceed in reverse order.

Turning the Sawhead and Table Over (fig. A3, E1, E2)

- Withhold the saw table with one hand and push the table release lever (2) to the left (fig. E1).
- Push the table downwards at the front and swing it over completely until the motor assembly is uppermost and the indentation engages in the retaining teeth of the table locking device (20).
- The head assembly is held down by a clamp strap at the front and a height adjuster (23) at the rear (fig. A3).
- Remove the strap.
- Rotate the wheel (55) counterclockwise whilst holding down the head until the "U"-shaped bracket (56) can be disengaged from its seating (fig. E2).
- Swing and push the height adjuster up.
- Holding the head firmly, allow the spring pressure to take the head upwards into its rest position.

Mounting the Saw Blade (fig. A1, A2, F1–F3)



WARNING: To reduce the risk of injury, turn unit off and disconnect machine from power source before installing and removing accessories, before adjusting or changing set-ups or when making repairs. Be sure the trigger switch is in the OFF position. An accidental start-up can cause injury.



WARNING: Be aware the saw blade shall be replaced in the described way only. Only use saw blades as specified under **Technical Data**; Cat.no.: DT4321.



WARNING: The teeth of a new blade are very sharp and can be dangerous.



WARNING: Always change blades with the machine in mitre saw mode.

- Ensure riving knife (16) is secured in the upper rest position (fig. A2).
- Insert the hex key (57) through the hole (58) in the belt casing into the spindle end (fig. F1). Place the blade spanner (59) onto the blade locking screw (60) (fig. F2).
- The blade locking screw has a left-handed thread, therefore holding the hex key firmly, turn the spanner clockwise to loosen.
- Depress the head lock up guard release lever (13) to release the lower guard (12), then raise the lower guard as far as possible.
- Remove the blade locking screw (60) and the outside arbor collar (61) (fig. F3).
- Make sure the inner flange and both faces of the blade are clean and free of dust.
- Install the saw blade (62) onto the shoulder (63) provided on the inside arbor collar (64), making sure that the teeth at the bottom edge of the blade are pointing toward the back of the saw (away from the operator).
- Carefully ease the blade into position and release the lower blade guard.

- Replace the outer arbor collar.
- Tighten the blade locking screw (60) by turning counterclockwise while holding the hex key steady with your other hand.
- Place the blade spanner and Hex key in their storage position.



WARNING: After mounting or replacing the blade, always check that the blade is fully covered by the guard. Make sure the blade spanner and hex key have been replaced in their storage position.

Adjustments for Mitre Saw Mode



WARNING: Be aware the saw blade shall be replaced in the described way only. Only use saw blades as specified under **Technical Data**; Cat.no.: DT4321.

Your mitre saw was accurately adjusted at the factory. If readjustment due to shipping and handling or any other reason is required, follow the steps below to adjust your saw. Once made, these adjustments should remain accurate.

Checking and Adjusting the Blade to the Fence (fig. G1, G2, H)

With the head in the vertical position and the bevel clamp handle (22) released, slacken the locking screw (65) in the rotating table location plunger (8) (fig. G1).

- Pull down the head until the blade just enters the saw kerf.
- Place a square (66) against the left side (7) of the fence and blade (62) (fig. G2). The angle should be 90°.



WARNING: Do not touch the tips of the blade teeth with the square.

- If adjustment is required, proceed as follows:
- Rotate the eccentric adjustment bush (67) until the face of the saw blade is flat against the square (fig. G1).
- Tighten the locking screw (65).
- Check that the red marks (68) near the blade slot (52) are in line with the 0° position (69) on the two scales (fig. H).
- If adjustment is required, loosen the screws (70) and bring the indicators in line. The 45° position should now also be accurate. If this is not the case, the blade is not perpendicular to the rotating table (see below).

Checking and Adjusting the Blade to the Table (fig. I1, I2)

- Loosen the bevel clamp knob (22) (fig. I1).
- Press the saw head to the right to ensure it is fully vertical and tighten the bevel clamp handle.
- Pull down the head until the blade just enters the saw kerf.
- Place a set square (66) on the table and up against the blade (62) (fig. I2). The angle should be 90°.



WARNING: Do not touch the tips of the blade teeth with the square.

- If adjustment is required, proceed as follows:
- Loosen the bevel clamp knob (22) (fig. I1) and turn the vertical position adjustment stop screw (71) in or out until the blade is at 90° to the table as measured with the square (66) (fig. I2).

Checking and Adjusting the Mitre Angle (fig. A1, A2, H)

The straight cross-cut and 45° mitre positions are pre-set.

- Pull up the rotating table location plunger (8) and rotate it counterclockwise a quarter of a turn (fig. A1).
- Loosen the rotating table clamp (3). The handle allows a ratchet-type action when full rotation of the handle is not possible.
- Grip the control handle (14) (fig. A2), compress the guard release lever (13) and lower the saw about halfway (fig. A1).
- Turn the sawhead with its rotating table to the required position.
- Tighten the rotating table clamp (3). The rotating table location plunger (8) will engage automatically (fig. A1).

- Using the red marks (68), the mitre saw table (4) can be set to any mitre angle left or right between 0° and 45° (fig. H).
- Proceed as for pre-set positions. The rotating table location plunger cannot be used for intermediate angles.



WARNING: Always make a trial cut in a piece of waste wood, to check for accuracy.

Adjusting the Fence (fig. J1, J2)

The moveable part of the left side of the fence can be adjusted to provide maximum support of the workpiece near the blade, while allowing the saw to bevel to a full 45° left. The sliding distance is limited by stops in both directions. To adjust the fence (7):

- Lift the lever (72) to release the fence (7).
- Slide the fence to the left.
- Make a dry run with the saw switched off and check for clearance. Adjust the fence to be as close to the blade as practical to provide maximum workpiece support, without interfering with the up and down movement of the arm.
- Push the lever (72) down to secure the fence in place.

Checking and Adjusting the Bevel Angle (fig. J1, K1, K2)

- Slide the side fence to the left as far as it will go (fig. J1).
- Loosen the bevel clamp handle (22) and move the saw head to the left. This is the 45° bevel position.
- If adjustment is required, proceed as follows:
- Turn the stopscrew (73) in or out as necessary until the pointer (74) indicates 45°.

ASSEMBLY FOR BENCH SAW MODE

Changing from Mitre Saw to Bench saw Mode (fig. A1–A3, E2, L1, L2)

- Put the blade into 0° cross-cut position with the rotating table location plunger (8) correctly located and the rotating table clamp (3) secured (fig. A1).
- Slacken the riving knife clamp bolt (75) just enough to allow the riving knife to enter the mounting slot (fig. L1).
- Take the riving knife (16) from its storage position against the saw head (fig. A2).
- Depress the guard release lever (13) to release the blade guard (12), then raise the blade guard as far as possible (fig. A1).
- Slide the riving knife bracket (76) fully into the mounting slot (77) (fig. L1). Tighten the clamp bolt.
- Gently release the lower guard until it is held in place behind the edge protruding from the inside of the riving knife.
- Remove the under-table guard.
- Pull down the saw head and swing the height adjuster (23) until its U-shaped bracket (56) engages on the pin provided in the base (fig. E2).
- Turn the wheel (55) of the adjuster to make the blade and riving knife protrude from the bench saw table (24) (fig. A3) to provide maximum cutting depth in bench saw mode.



WARNING: The blade should not foul the lower blade guard.

- Pull the table release lever (2) to the left, lift the front edge of the table and flip it back through 180° until the teeth of the table-locking device (20) automatically engage the saw blade retention lever to secure it in the bench saw mode (fig. L2).



WARNING: Be careful not to lose control over the movement of the table.

Position of the Riving Knife (fig. M)

- Fit the riving knife (16) as described above. Once fitted, the riving knife does not require further adjustment.

Fitting the Upper Blade Guard (fig. N)

The upper blade guard (25) is designed to be quickly and easily attached, via a spring-loaded plunger to the hole in the riving knife (16) once it has been positioned through the worktable for bench saw mode.

Secure the upper blade guard (25) to the riving knife by pulling the knob (76) to allow the plunger in the guard to engage.



WARNING: Never use your saw in bench saw mode without the upper guard correctly fitted.

Mounting and Adjusting the Parallel Fence (fig. O)

The dual height parallel fence (26) can be used in two positions (11 or 62 mm). The parallel fence can be mounted on either side of the blade.

TO MOUNT THE FENCE INTO THE APPROPRIATE POSITION, PROCEED AS FOLLOWS:

- Loosen the knob (77).
- Slide the bracket on from the left or the right. The clamping plate (78) engages behind the front edge of the table.
- Tighten the knob (77).
- Check that the fence is parallel to the blade.
- If adjustment is required, proceed as follows:
- Adjust the fence so that it is parallel to the blade by checking the distance between the blade and the fence at the front and rear of the blade. To do so, turn the adjustment screw in the fence support in or out as necessary.

The default set-up of the fence is to the right-hand side of the blade.

TO PREPARE THE FENCE FOR USE TO THE LEFT-HAND SIDE OF THE BLADE, PROCEED AS FOLLOWS:

- Loosen the knob (77).
- Pull out the bracket (79) and replace it in the other end.
- Fit the fence to the table.
- Tighten the knob (77).



WARNING: Use the 11 mm profile for ripping low workpieces to allow access between the blade and the fence for the push stick (17).



WARNING: The rear end of the fence should be level with the front of the riving knife.

Changing from Bench saw to Mitre Saw Mode (fig. A3, D, E1, E2, L1)

- Remove the parallel fence (26) (fig. A3).
- Turn the wheel (55) of the height adjuster (23) to provide maximum cutting depth in mitre saw mode (fig. E2).
- Proceed as described in the section **Turning the sawhead and table over**.
- Slacken the riving knife clamp bolt (75) and remove the riving knife (16), while holding the blade guard (12) (fig. L1).
- Lower the blade guard.
- Place the riving knife in its storage position against the saw head.
- Replace the under-table guard (50) (fig. D).

Prior to Operation

- Install the appropriate saw blade. Do not use excessively worn blades. The maximum rotation speed of the tool must not exceed that of the saw blade.
- Do not attempt to cut excessively small pieces.
- Allow the blade to cut freely. Do not force.
- Allow the motor to reach full speed before cutting.
- Make sure all locking knobs and clamp handles are tight.

OPERATION

Instructions for Use



WARNING: Always observe the safety instructions and applicable regulations.



WARNING: To reduce the risk of serious personal injury, turn tool off and disconnect tool from power source before making any adjustments or removing/installing attachments or accessories.



WARNING:

- The attention of UK users is drawn to the "woodworking machines regulations 1974" and any subsequent amendments.
- Ensure the material to be sawn is firmly secured in place.
- Apply only a gentle pressure to the tool and do not exert side pressure on the saw blade.
- Avoid overloading.

Ensure the machine is placed to satisfy your ergonomic conditions in terms of table height and stability. The machine site shall be chosen so that the operator has a good overview and enough free surrounding space around the machine that allows handling of the workpiece without any restrictions.

To reduce effects of vibration make sure the environment temperature is not too cold, machine and accessory is well maintained and the workpiece size is suitable for this machine.

Switching on and off (fig. A1–A2, P)

This machine has two independent switching systems. In bench saw mode, the on/off switch (1) (fig. A1) is used. In mitre saw mode, the trigger switch (15) (fig. A2) is used.

BENCH SAW MODE (FIG. P)

The on/off switch used in bench saw mode offers multiple advantages:

- no-volt release function: should the power be shut off for some reason, the switch has to be deliberately reactivated.
- extra safety: the hinged safety enclosure plate can be locked by passing a padlock through the centre hasp. The plate also serves as an "easy to locate" emergency stop button as pressure on the front of the plate will depress the stop button.

To switch the machine on, press the green start button (80).

To switch the machine off, press the red stop button (81).

MITRE SAW MODE (FIG. A2)

To switch the machine on, press the trigger switch (15).

To switch the machine off, release the trigger switch.

BASIC SAW CUTS

Sawing in Mitre Saw Mode

It is dangerous to operate without guarding. Guards must be in position when sawing.

- Make sure that the under-table guard does not become clogged with sawdust.

Clamping the Workpiece (fig. Q, R, S, X)



WARNING: A workpiece that is clamped, balanced and secure before a cut may become unbalanced after a cut is completed. An unbalanced load may tip the saw or anything the saw is attached to, such as a table or workbench. When making a cut that may become unbalanced, properly support the workpiece and ensure the saw is firmly bolted to a stable surface. Personal injury may occur.



WARNING: The clamp foot must remain clamped above the base of the saw whenever the clamp is used. Always clamp the workpiece to the base of the saw – not to any other part of the work area. Ensure the clamp foot is not clamped on the edge of the base of the saw.



CAUTION: Always use a workpiece clamp to maintain control and reduce the risk of personal injury and workpiece damage.

Use the workpiece clamp (34) provided with your saw. Other aids such as spring clamps, bar clamps or C-clamps may be appropriate for certain sizes and shapes of material. The left side fence will slide from side to side to aid in securing.

TO INSTALL CLAMP

1. Insert the workpiece clamp into the hole lateral to the mitre fence.
2. Rotate the clamp arm toward to the front of the mitre saw.
3. Loosen the knob to adjust the clamp up and down and secure it in the chosen height.
4. Use the fine adjust knob to firmly clamp the workpiece.

NOTE: Place the clamp on the right side of the base when beveling. ALWAYS MAKE DRY RUNS (UNPOWERED) BEFORE FINISH CUTS TO CHECK THE PATH OF THE BLADE. ENSURE THE CLAMP DOES NOT INTERFERE WITH THE ACTION OF THE SAW OR GUARDS.

General Handling

- In the mitre saw mode, the sawhead is automatically locked in the upper "park" position.
- Squeezing the guard release lever will unlock the sawhead. Moving the sawhead down retracts the moveable lower guard.
- Never seek to prevent the lower guard returning to its park position when the cut is completed.
- The minimum length of offcut material is 10 mm.
- When cutting UPVC sections, a supporting piece made out of timber with a complementary profile should be placed beneath the material being cut to provide the correct level of support.

Vertical Straight Cross Cut (fig. Q)

- Set the rotating table to 0° and make sure that the locating plunger is engaged.
- Tighten the rotating table clamping knob.
- Place the wood to be cut against the fence. Take hold of the control handle and press in the guard retraction lever.
- Switch the machine on.
- Allow the blade to cut freely. Do not force.
- After completing the cut, release the switch and wait for the saw blade to come to a complete standstill before returning the head to its upper rest position.
- Release the guard retraction lever.



WARNING: Do not allow the sawhead to jump back unaided to prevent damage.

Mitre Cuts (fig. R)

- Set the required mitre angle.
- Ensure that the rotating table clamp is tightly secured.
- Proceed as for a vertical straight cross-cut.
- Prevent the blade cutting the table if the angle is not 45°.



WARNING: When mitring the end of a piece of wood with a small off-cut, position the wood to ensure that the off-cut is to the side of the blade with the greater angle to the fence: left mitre, off-cut to the right mitre, off-cut to the left.

Bevel Cuts (fig. A2, S)

- Release the bevel clamp handle (22) and tilt the head to the angle required.
- Tighten the bevel clamp handle.
- Proceed as for a vertical straight cross-cut.

Compound Mitre

This cut is a combination of a mitre and a bevel cut. The limitations are 35° mitre/30° bevel. Do not exceed these limits.

Set the bevel angle and subsequently set the mitre angle.

Sawing in the Bench Mode

- Always use the riving knife.
- Always ensure that the riving knife and blade guard are correctly aligned.
- Always ensure that the mitre saw is set and locked in 0° mitre.



WARNING: DO NOT cut any type of metal material.

Ripping (fig. A2, T)

- Set the bevel angle to 0°.
- Adjust the saw blade height. The correct blade position is to have the tips of three teeth above the top surface of the wood.
- Set the parallel fence to the required distance.
- Hold the workpiece flat on the table and against the fence. Keep the workpiece approx. 25 mm away from the saw blade.
- Keep both hands away from the path of the saw blade.
- Switch the machine on and allow the saw blade to reach full speed.
- Slowly feed the workpiece underneath the upper blade guard, keeping it firmly pressed against the fence. Allow the teeth to cut, and do not force the workpiece through the saw blade. The saw blade speed should be kept constant.
- Remember to use the push stick (17) when close to the blade.
- After completing the cut, switch the machine off, allow the saw blade to stop and remove the workpiece.



WARNING: Never push or hold the free or cut-off side of the workpiece.



WARNING: Always use a push stick when ripping small workpieces.

Bevel Cuts (fig. U)

- Release the bevel clamp handle and set the blade to the required angle.
- In order to prevent material jamming between the blade and the fence, position the fence to the left of the blade.
- Proceed as for vertical ripping.

Mitre Cuts (fig. V1–V3)

- To adjust the mitre fence, loosen the stop screw locknut (81) and screw the stop (82) in or out until the mitre pointer reads 0° (fig. V1).
- Set the blade height and angle.
- Insert the slide bar (83) of the mitre fence into the groove (84) provided in the left-hand side of the table (fig. V2).
- Loosen the mitre locking knob (85) and rotate the fence to set the scale to the required angle (fig. V3).
- Tighten the mitre locking knob (85).
- Place the workpiece against the flat surface of the mitre fence. Switch on and, holding the workpiece firmly, slide the fence along the groove to take the workpiece into the blade. When the cut is completed, switch off immediately.

Fence Positions, Bench Saw Mode (fig. W)

- For ripping thin materials, use the 11 mm profile of the dual height parallel fence and position the fence opposite the front edge of the riving knife.
- For ripping thicker materials, use the 62 mm profile of the dual height parallel fence.
- For cross-cutting narrow and short workpieces (fig. W):
 - Adjust the parallel fence with the low profile facing the blade and install the rear of the fence in line with the leading edge of the blade.
 - Set the workpiece against the mitre fence (at 0° or 90°) and push the mitre fence to make the cut.

- To prevent small offcut pieces fouling against the blade, prepare a tapered length of timber and clamp it on the rear edge of the worktable close enough to the right-hand side of the blade so that successive offcuts feed automatically to the right.
- For ripping narrow (< 120 mm) and long workpieces:
 - Place the fence in rearmost position to maintain accuracy during long cuts.
 - Push the workpiece with both hands (one on each side of the blade).
 - Use a push stick when close to the blade.
 - Support long workpieces at the outfeed side.
- For ripping wider (> 120 mm) workpieces:
 - Adjust the fence forward as in figure W if the material being cut tends to jam between the blade or the riving knife and the fence.

Optional Attachments



WARNING: Prior to assembling any accessories always unplug the machine.



WARNING: Since accessories, other than those offered by DEWALT, have not been tested with this product, use of such accessories with this tool could be hazardous. To reduce the risk of injury, only DEWALT, recommended accessories should be used with this product.

DUST EXTRACTION KIT (FIG. A1, A2, A8)

This machine is provided with three dust extraction points for use in mitre mode and two in bench mode.

- When sawing wood, always connect a dust extraction device designed in accordance with the relevant regulations regarding dust emission.



WARNING: Whenever possible, connect a dust extraction device designed in accordance with the relevant regulations regarding dust emission.

Connect a dust collection device designed in accordance with the relevant regulations. The air velocity of externally connected systems shall be 20 m/s +/- 2 m/s. Velocity to be measured in connection tube at the point of connection, with the tool connected but not running.

A separate dust kit is available as an option (DE3500)

1. Fit the dust extraction tube to the nozzles; the longer hose to upper nozzle.
2. Connect the hoses to the three way connector.

Connecting - mitre saw position

- Connect one hose to the under-table guard.
- Connect one hose to the small diameter outlet and one to the large diameter outlet using the corresponding spouts.
- Connect the hoses to the 3-way connector.
- Connect the single outlet of the 3-way connector to the hose from the dust extractor.

Connecting - bench saw position

- Connect one hose to the small diameter outlet and one to the large diameter using the corresponding spouts.
- Blank off the middle opening of the 3-way connector.
- Connect both hoses to the outer outlets.

MITRE SAW EXTRA SUPPORT/LENGTH STOP (FIG. A4)

The extra support and length stop can be mounted on the left-hand side or on the right-hand side, or with two sets on either side.

- Fit the items 28–34 onto the two guide rails (29).
- Use the swivelling stop (30) for cross-cutting 210 mm wide boards (15 mm thick).

ROLLER SUPPORT TABLE (FIG. A5)

In mitre saw mode, the roller support table can be mounted on the left-hand side or on the right-hand side, or with two sets on either side.

In bench saw mode, it can also be mounted in front or at the rear of the saw table.

SIDE EXTENSION TABLE (FIG. A6)

The side extension table increases the distance from the rip fence to the blade to 600 mm or more, depending on the rod length fitted to the machine and the clamped position of the table. The side extension table must be used in conjunction with guide rails (29) (option).

The adjustable table is equipped with an engraved scale along its front edge and mounted on a sturdy base which clamps to the guide rods.

- Fit the extension table to the right-hand side of the machine for continuity of the distance scale on both tables.

SINGLE SLIDING TABLE (FIG. A7)

This sliding table (37) allows for board sizes to the left of the blade up to 1200 x 900 mm.

The guide rods are mounted on a sturdy alloy extrusion which is quickly detachable from the machine and yet fully adjustable in all planes.

The fence incorporates a full length measuring tape for quick positioning of an adjustable stop and an adjustable support for narrow workpieces.

DOUBLE SLIDING TABLE

This sliding table allows for board sizes to the left of the blade up to 1850 mm.

Transporting



WARNING: Always transport the machine in bench saw mode with the upper blade guard fitted.

- Remove the legs.



WARNING: When carrying the machine, always use the hand indentations (fig.A1;40) and seek for assistance. The machine could be too wide protruding for one person to handle.

MAINTENANCE

Your DEWALT power tool has been designed to operate over a long period of time with a minimum of maintenance. Continuous satisfactory operation depends upon proper tool care and regular cleaning.



WARNING: To reduce the risk of injury, turn unit off and disconnect machine from power source before installing and removing accessories, before adjusting or changing set-ups or when making repairs. Be sure the trigger switch is in the OFF position. An accidental start-up can cause injury.



Lubrication

The bearings of the motor are pre-lubricated and watertight.

- Slightly oil the rotating table bearing surface where it slides on the lip of the fixed table at regular intervals.
- Clean the parts subject to accumulation of sawdust and chips periodically with a dry brush.



Cleaning



WARNING: Blow dirt and dust out of the main housing with dry air as often as dirt is seen collecting in and around the air vents. Wear approved eye protection and approved dust mask when performing this procedure.



WARNING: Never use solvents or other harsh chemicals for cleaning the non-metallic parts of the tool. These chemicals may weaken the materials used in these parts. Use a cloth dampened only with water and mild soap. Never let any liquid get inside the tool; never immerse any part of the tool into a liquid.



WARNING: To reduce the risk of injury, regularly clean the table top.



WARNING: To reduce the risk of injury, regularly clean the dust collection system.

Before use, carefully check the upper blade guard, movable lower blade guard as well as the dust extraction tube to determine that it will operate properly. Ensure that chips, dust or workpiece particle cannot lead to blockage of one of the functions.

In case of workpiece fragments jammed between saw blade and guards disconnect the machine from the power supply and follow the instructions given in section **Mounting the Saw Blade**. Remove the jammed parts and reassembling the saw blade.

Optional Accessories



WARNING: Since accessories, other than those offered by DEWALT, have not been tested with this product, use of such accessories with this tool could be hazardous. To reduce the risk of injury, only DEWALT, recommended accessories should be used with this product.

SAW BLADES

ALWAYS USE noise reduced 250 mm SAW BLADES WITH 30 mm ARBOR HOLES. SPEED RATING MUST BE AT LEAST 3000 RPM. Never use a smaller or greater diameter blade. It will not be guarded properly. Use cross cut blades only. Do not use blades designed for fast ripping, combination blades or blades with hook angles in excess of 10°.

BLADE DESCRIPTIONS		
APPLICATION	DIAMETER	TEETH
Construction Saw Blades (thin kerf with anti-stick rim)		
General Purpose	250 mm	30 (Series 60)
Woodworking Saw Blades (provide smooth, clean cuts)		
Fine crosscuts	250 mm	60 (Series 60)

Consult your dealer for further information on the appropriate accessories.

Protecting the Environment



Separate collection. This product must not be disposed of with normal household waste.

Should you find one day that your DEWALT product needs replacement, or if it is of no further use to you, do not dispose of it with household waste. Make this product available for separate collection.



Separate collection of used products and packaging allows materials to be recycled and used again. Re-use of recycled materials helps prevent environmental pollution and reduces the demand for raw materials.

Local regulations may provide for separate collection of electrical products from the household, at municipal waste sites or by the retailer when you purchase a new product.

DEWALT provides a facility for the collection and recycling of DEWALT products once they have reached the end of their working life. To take advantage of this service please return your product to any authorised repair agent who will collect them on our behalf.

You can check the location of your nearest authorised repair agent by contacting your local DEWALT office at the address indicated in this manual. Alternatively, a list of authorised DEWALT repair agents and full details of our after-sales service and contacts are available on the Internet at: www.2helpU.com.

GUARANTEE

DEWALT is confident of the quality of its products and offers an outstanding guarantee for professional users of the product. This guarantee statement is in addition to and in no way prejudices your contractual rights as a professional user or your statutory rights as a private non-professional user. The guarantee is valid within the territories of the Member States of the European Union and the European Free Trade Area.

• 30 DAY NO RISK SATISFACTION GUARANTEE •

If you are not completely satisfied with the performance of your DEWALT tool, simply return it within 30 days, complete with all original components, as purchased, to the point of purchase, for a full refund or exchange. The product must have been subject to fair wear and tear and proof of purchase must be produced.

• ONE YEAR FREE SERVICE CONTRACT •

If you need maintenance or service for your DEWALT tool, in the 12 months following purchase, you are entitled to one service free of charge. It will be undertaken free of charge at an authorised DEWALT repair agent. Proof of purchase must be produced. Includes labour. Excludes accessories and spare parts unless failed under warranty.

• ONE YEAR FULL WARRANTY •

If your DEWALT product becomes defective due to faulty materials or workmanship within 12 months from the date of purchase, DEWALT guarantees to replace all defective parts free of charge or – at our discretion – replace the unit free of charge provided that:

- The product has not been misused;
- The product has been subject to fair wear and tear;
- Repairs have not been attempted by unauthorised persons;
- Proof of purchase is produced;
- The product is returned complete with all original components.

If you wish to make a claim, contact your seller or check the location of your nearest authorised DEWALT repair agent in the DEWALT catalogue or contact your DEWALT office at the address indicated in this manual. A list of authorised DEWALT repair agents and full details of our after-sales service is available on the Internet at: www.2helpU.com.

Belgique et Luxembourg België en Luxemburg	Black & Decker - DEWALT Nieuwlandlaan 7, IZ Aarschot B156 B-3200 Aarschot	Dutch Tel: 32 70 220 063 French Tel: 32 70 220 062	Fax: 32 70 225 585 Fax: 32 70 222 441 www.dewalt.be
Danmark	DEWALT Sluseholmen 2-4 2450 København SV		Tlf: 70201511 Fax: 70224910 www.dewalt.dk
Deutschland	DEWALT Richard Klinger Str. 11 65510 Idstein		Tel: 06126-21-1 Fax: 06126-21-2770 www.dewalt.de
Ελλάς	Black & Decker (Ελλάς) A.E. Στράβωνος 7 & Βουλιαγμένης 159 Γλυφάδα 16674, Αθήνα	Τηλ: 30 210 8981-616 Service: 30 210 8981-616 Φαξ: 30 210 8983-570	www.dewalt.gr
España	DEWALT Parque de Negocios "Mas Blau" Edificio Muntadas, c/Bergadá, 1, Of. A6 08820 El Prat de Llobregat (Barcelona)		Tel: 934 797 400 Fax: 934 797 419 www.dewalt.es
France	DEWALT 5, allée des hêtres BP 30084, 69579 Limonest Cedex		Tel: 04 72 20 39 20 Fax: 04 72 20 39 00 www.dewalt.fr
Schweiz Suisse Svizzera	DEWALT In der Luberzen 40 8902 Urdorf		Tel: 01 - 730 67 47 Fax: 01 - 730 70 67 www.dewalt.ch
Ireland	DEWALT Calpe House Rock Hill Black Rock, Co. Dublin		Tel: 00353-2781800 Fax: 00353-2781811 www.dewalt.ie
Italia	DEWALT c/o Energypark Building 03 sud, Via Monza 7/A, 20871 Vimercate (MB), IT		Tel: 800-014353 Fax: 39 039 9590 317 www.dewalt.it
Nederlands	Black & Decker - DEWALT Joulehof 12 4600 AB Bergen Op Zoom		Tel: 31 164 283 063 Fax: 31 164 283 200 www.dewalt.nl
Norge	DEWALT Postboks 4613, Nydalen 0405 Oslo		Tel: 45 25 13 00 Fax: 45 25 08 00 www.dewalt.no
Österreich	DEWALT Werkzeug Vertriebsges m.b.H Oberlaaerstrasse 248 A-1230 Wien		Tel: 01 - 66116 - 0 Fax: 01 - 66116 - 14 www.dewalt.at
Portugal	DEWALT Centro de Escritórios de Sintra Avenida Almirante Gago Coutinho, 132/134, Edifício 142710-418 Sintra 2710-418 Lisboa		Tel: 214 66 75 00 Fax: 214 66 75 75 www.dewalt.pt
Suomi	DEWALT Tekniikantie 12 02150 Espoo, Finland		Puh: 010 400 430 Faksi: 0800 411 340 www.dewalt.fi
Sverige	DEWALT Box 94 431 22 Mölndal		Tel: 031 68 61 00 Fax: 031 68 60 08 www.dewalt.se
Türkiye	KALE Hırdavat ve Makina A.Ş. Defterdar Mah. Savaklar Cad. No:15 Edirnekapı / Eyüp / İSTANBUL 34050 TÜRKİYE		Tel: 0212 533 52 55 Faks: 0212 533 10 05 www.dewalt.com.tr
United Kingdom	DEWALT 210 Bath Road; Slough, Berks SL1 3YD	Tel: 01753-56 70 55 Fax: 01753-57 21 12	www.dewalt.co.uk
Middle East Africa	DEWALT P.O. Box - 17164, Jebel Ali (South Zone), Dubai, UAE		Tel: 971 4 8863030 Fax: 971 4 8863333 www.dewalt.ae